



# STUDENTS with symptoms that are concerning for COVID-19

**STUDENT** screens positive for a **concerning symptom** on screener or develops concerning symptoms at school  
**AND** has no known exposure to someone with COVID-19 in the past 14 days

**HEALTHCARE EVALUATION IS INDICATED**

Household members should stay home until test results or healthcare evaluation results are back. School contacts may continue attending school

**CLEAR ALTERNATIVE DIAGNOSIS**

(e.g. positive strep test, urinary infection)

Can return to school after 24 hours of resolution of fever and improvement in symptoms with note from healthcare provider

Healthy household members may continue working, going to school or childcare

**NO CLEAR ALTERNATIVE DIAGNOSIS**

**COVID-19 TESTING INDICATED**

Student stays home until results are back

Household members stay home until results are back. School contacts may attend school

**NEGATIVE MOLECULAR/PCR TEST:** Stay home until fever free for 24 hours without using fever-reducing medicines, and symptoms improving

Healthy household members may continue working, going to school or childcare

**POSITIVE TEST:** Isolate for at least 10 days, until fever free for 24 hours without using fever-reducing medicines, and symptoms improving. A negative test is NOT needed to return to school.

Household members must quarantine at home while the positive student is in isolation AND for 14 days after last exposure to student with COVID-19 or cleared by the health department. School contacts must quarantine.

**TESTING NOT DONE:** Assume the student is positive and isolate for at least 10 days, symptoms improving and fever free for 24 hours

Household members must quarantine at home while the positive student is in isolation AND for 14 days from last exposure to student with COVID-19 or cleared by the health department. School contacts may continue attending school.



**If your child has the following symptoms associated with COVID-19 in children, healthcare evaluation is needed:**

**Any TWO of the following:**

- Fever (measured or subjective)
- Chills
- Headache
- Extreme Tiredness/Fatigue
- Sore Throat
- Congestion or Runny nose
- Body aches
- Nausea/vomiting or Diarrhea
- Shortness of breath

**OR**

**ONE of the following:**

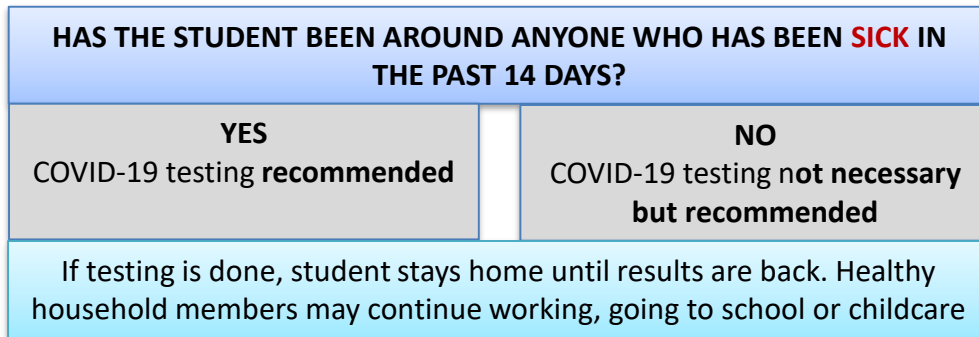
- New cough
- Loss of taste or smell





# STUDENTS with symptoms that are **NOT** as concerning for COVID-19

**STUDENT** has symptoms that are **NOT** as concerning for COVID-19 or has only **ONE** of the symptoms on the list below  
**AND** has no known exposure to someone with COVID-19 in the past 14 days:



**NEGATIVE TEST**  
Stay home until fever free for 24 hours and student improving

Healthy household members may continue working, going to school or childcare

**POSITIVE PCR TEST**  
**Isolate for at least 10 days.**  
A negative test is **NOT** needed to return to school

**Household members must quarantine** at home while the positive student is in isolation **AND** for 14 days after last exposure to student with COVID-19 or cleared by the health department. School contacts must quarantine for 14 days.

**IF TESTING IS NOT DONE**  
Stay home until fever free for 24 hours and symptoms are improving.

\*If symptoms do not improve in 2 days, contact a healthcare provider and have testing for COVID-19

Healthy household members may continue working, going to school or childcare

**SYMPTOMS CONCERNING FOR COVID-19**

If the child has the following symptoms, healthcare evaluation is needed:

Any **TWO** of the following:

- Fever (measured or subjective)
- Chills
- Headache
- Extreme Tiredness/Fatigue
- Sore Throat
- Congestion or Runny nose
- Body aches
- Nausea/vomiting or Diarrhea
- Shortness of breath

**OR**

**ONE** of the following:

- New cough
- Loss of taste or smell

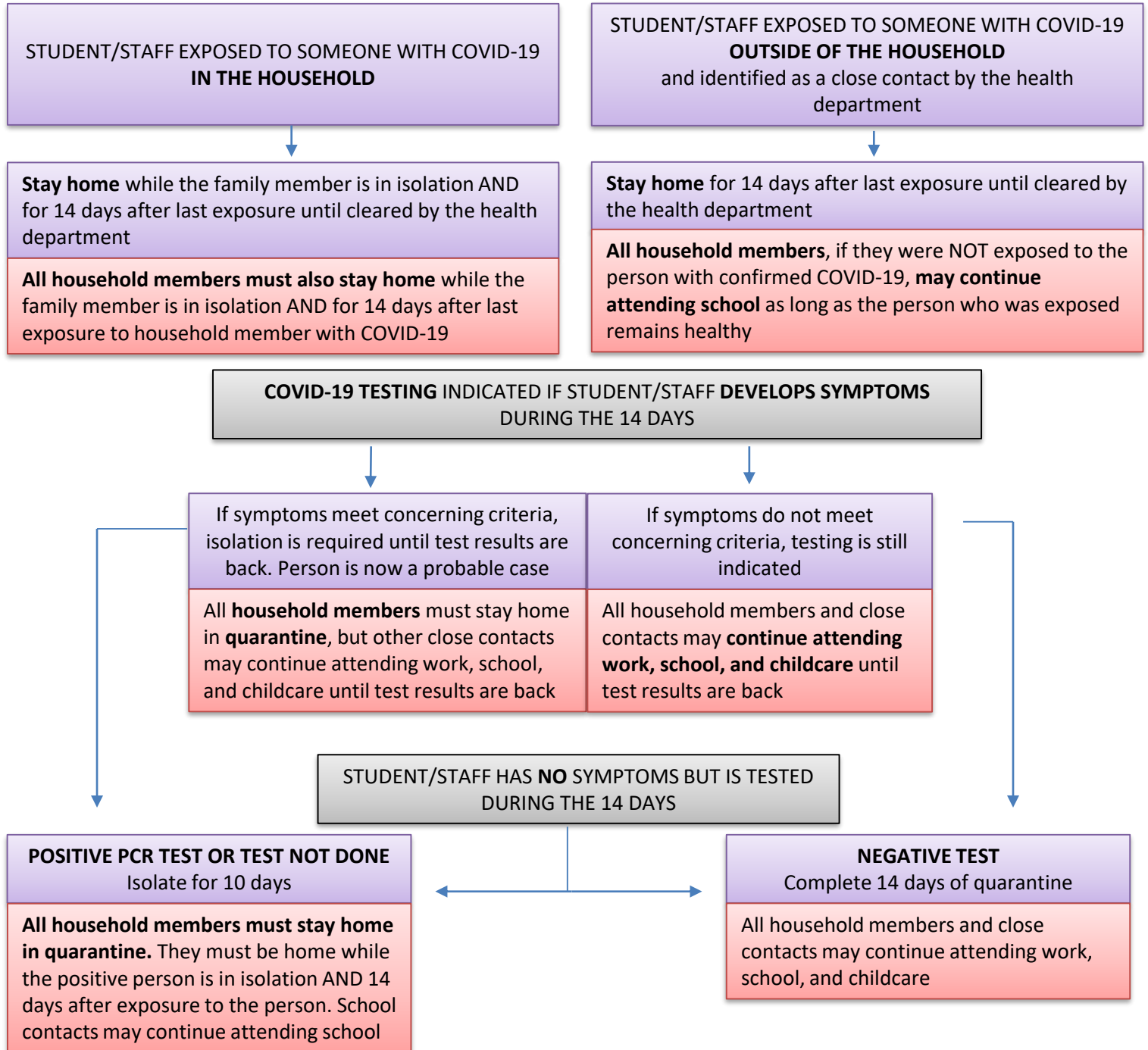
If the child **does not** meet these criteria, then follow the guidance above





# Students/Staff who have known exposure to a person with confirmed COVID-19

**Stay home for 14 days** after last exposure until cleared by the health department  
Consider COVID-19 testing. Must complete 14 days of quarantine **EVEN** if test is negative



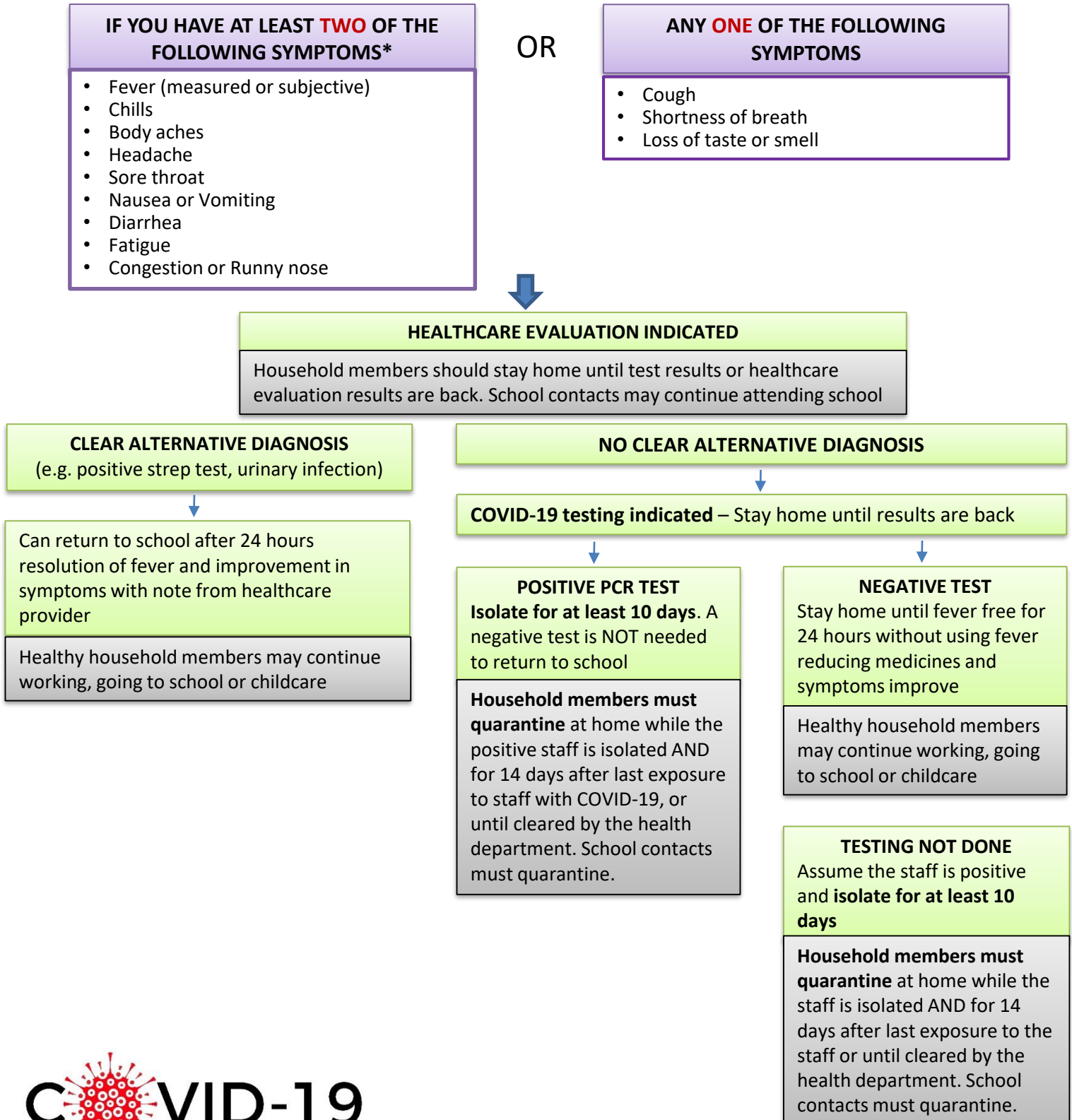
**A negative COVID-19 test does not mean that someone who is a close contact can end the 14-day quarantine early**





# School STAFF MEMBER has symptoms concerning for COVID-19

**STAFF** screens positive for a **symptom** on screener AND has **no known exposure** to someone with COVID-19 in the past 14 days:

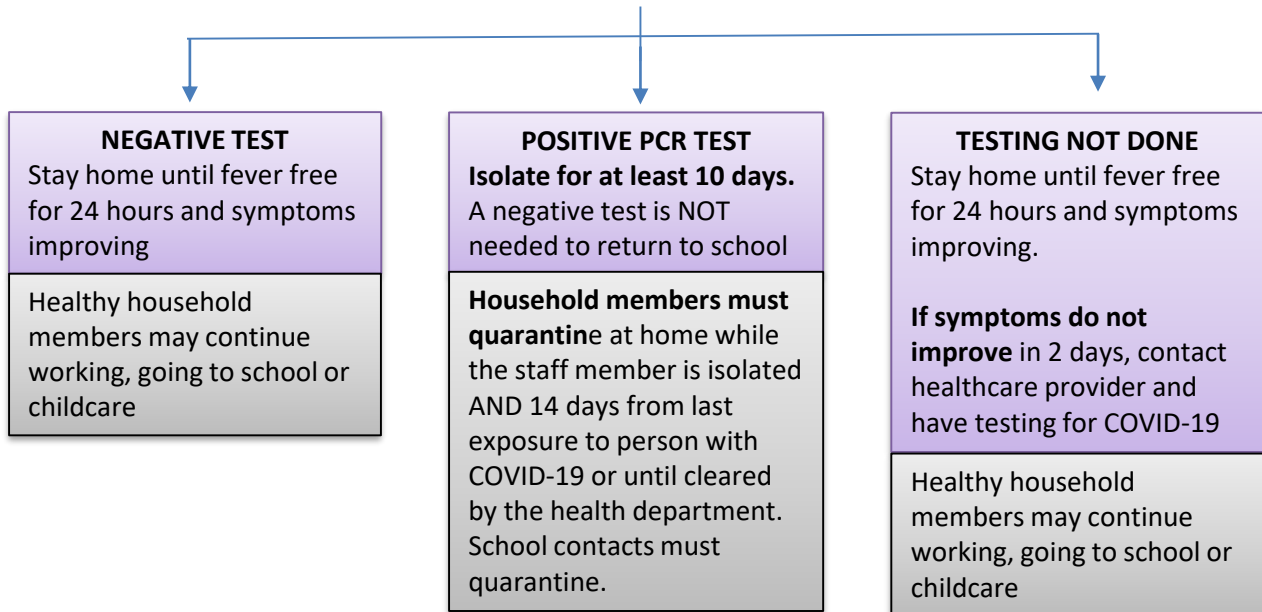
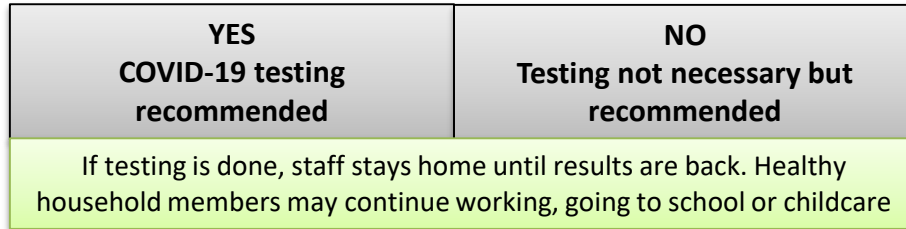


\* Criteria from Council of State and Territorial Epidemiologists



Your symptoms DO NOT meet the criteria below.

Have you been around anyone who has been sick in the past 14 days?



**SYMPTOMS CONCERNING FOR COVID-19:**

Any **TWO** of the following:

- Fever (measured or subjective)
- Chills
- Body aches
- Headache
- Sore throat
- Nausea or Vomiting
- Diarrhea
- Fatigue
- Congestion or Runny nose

**OR**

**ONE** of the following:

- Cough
- Shortness of breath
- Loss of taste or smell

If you do not meet these criteria, then follow the guidance above

